

# FIREWOOD ALERT

KEEP EXOTIC INSECT PESTS AWAY FROM IOWA TREES  
DON'T MOVE FIREWOOD!

Exotic insect pests like the Emerald Ash Borer are major threats to Iowa's trees

Emerald Ash Borer, a non-native beetle discovered in Michigan, kills ash trees. It can easily be transported to uninfested areas through movement of infested ash firewood.

To help protect Iowa from the Emerald Ash Borer and other exotic insects:

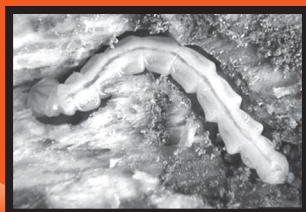
- USE LOCAL SOURCES OF FIREWOOD - DO NOT BRING FIREWOOD FROM HOME.
- IF YOU HAVE ALREADY BROUGHT FIREWOOD FROM HOME,  
DO NOT TAKE IT BACK HOME OR LEAVE IT HERE

**BURN IT!**

## EMERALD ASH BORER



ADULT



LARVA



FEEDING TUNNELS



D-SHAPED EXIT HOLES

For more information on the Emerald Ash Borer:

- Contact the IDNR Forestry Bureau's Forest Health Forester at 515/233-1161 or the Iowa Department of Ag & Land Stewardship's State Entomologist at 515/725-1470
- Visit Iowa DNR's website at: <http://www.iowadnr.com/forestry/pdf/invasive/borer.pdf>

Cutty's Okoboji Resort Club, 1528 Hwy. 86, Spirit Lake, IA 51360 (712) 336-2226